



RIVERSIDE COUNTY FLOOD CONTROL  
AND WATER CONSERVATION DISTRICT

**AGENDA**

Commissioners of Zone 7 of the Riverside County Flood Control and Water Conservation District will hold a Public Budget Hearing at 11:00 a.m. on Wednesday, December 15, 2021 at the Riverside County Flood Control District office, 1995 Market Street, Riverside.

The purpose of this meeting is to receive requests from interested parties for project funding for the budget of Fiscal Year 2022-2023.

- Call to Order ..... Commissioner Vincent Scarpino
- Introductory Comments.....Jason Uhley
- Zone 7 Financial Overview ..... Jeanine Rey
- Chief Engineer's Report for Zone 7..... Claudio Padres
- Receive Zone 7 Project Requests .....Interested Parties
- Closing Comments .....Jason Uhley

**The Budget Work Session is set for 11:00 a.m. on Wednesday, February 23, 2022 at the Riverside County Flood Control and Water Conservation District office, 1995 Market Street, Riverside. The purpose of the meeting is to discuss the budgeting of projects for Fiscal Year 2022-2023.**

# ZONE 7

ERIC CROUTERS, 3rd District

VINCENT SCARPINO, 1st District

STEVEN MARTIN BUSCH, 3rd District

The demand for infrastructure generally outpaces available financial resources leaving many unmet needs.

The district must consider public safety above all else, but also strive to develop the most economical project possible consistent with this obligation.

The available fund balance usually makes up the difference if projected revenue does not cover projected appropriations.



## Fund Balance for FY 2020–2021

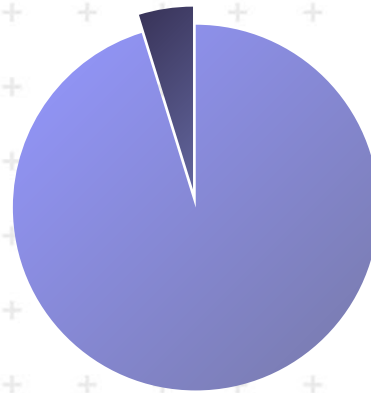
JULY 1, 2020 \$29,159,930

JUNE 30, 2021 \$31,128,176

## Sources

(Where the money comes from)

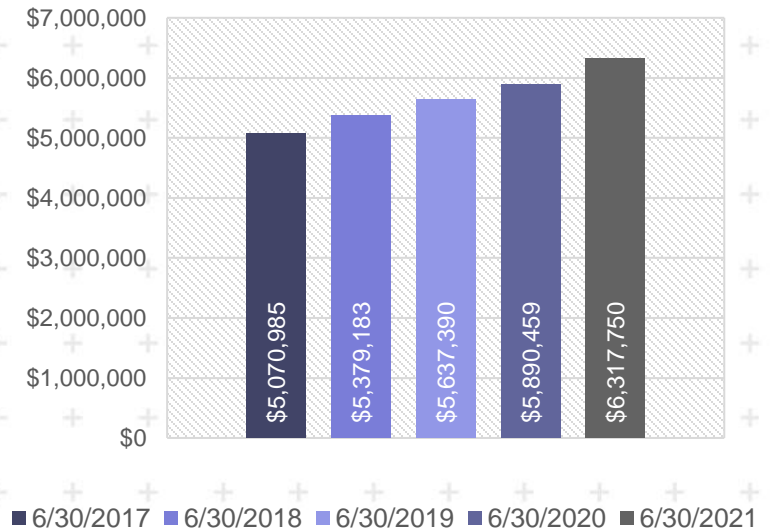
TOTAL \$6,635,000



- Other – 5% \$317,000
- Property Taxes – 95% \$6,318,000

## Property Taxes

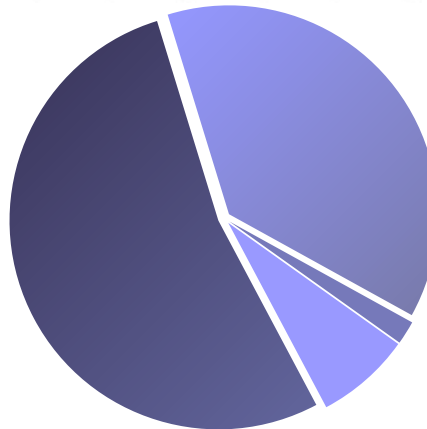
(5 year trend)



## Expenditures

(Where the money is spent)

TOTAL \$4,667,000

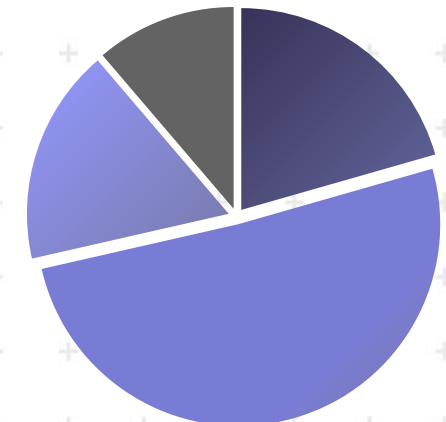


- Services & supplies – 38% \$1,763,000
- Salaries & Benefits – 53% \$2,475,000
- Other – 2% \$85,000
- Capital – 7% \$344,000

## Uses

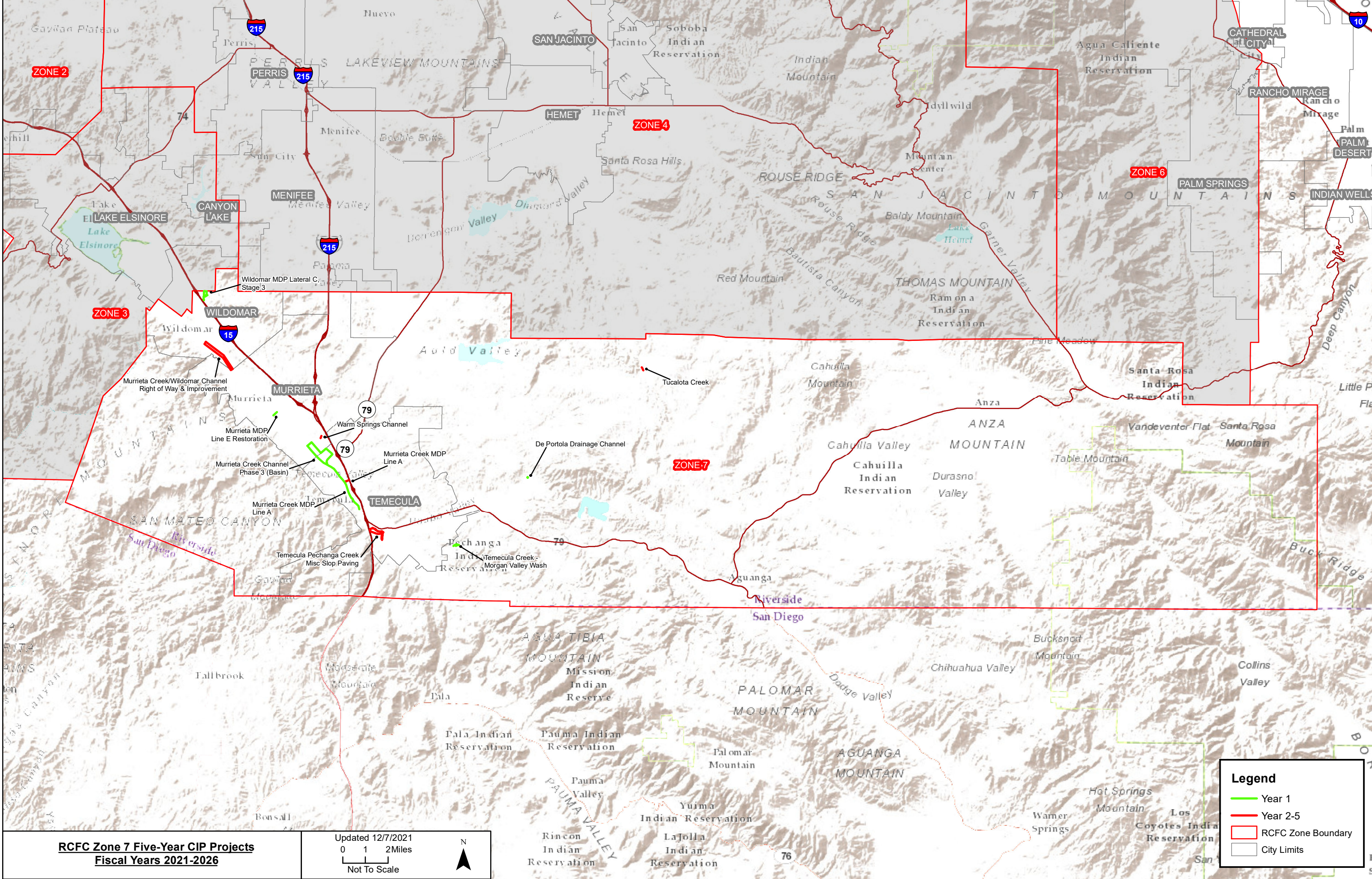
(How the money is used)

TOTAL \$4,667,000



- Administration – 11% \$525,000
- Maintenance – 21% \$960,000
- District Led Projects – 51% \$2,374,000
- General Zone Work – 17% \$808,000





**RCFC Zone 7 Five-Year CIP Projects  
Fiscal Years 2021-2026**

Updated 12/7/2021  
0 1 2 Miles  
Not To Scale



**Legend**

- Year 1
- Year 2-5
- RCFC Zone Boundary
- City Limits



**RIVERSIDE COUNTY FLOOD CONTROL AND WATER CONSERVATION DISTRICT**  
**DISTRICT LED PROJECT SUMMARY - ZONE 7**  
**FISCAL YEARS 2021-22 THROUGH 2025-26**

| Project Number                           | Stg No. | Project Title                         | Project Cost         | Appropriation      |                     | Funding Sources (5-Year Total) |                    |                       |                       | Total Not District Funded |
|--|---------|---------------------------------------|----------------------|--------------------|---------------------|--------------------------------|--------------------|-----------------------|-----------------------|---------------------------|
|  |         |                                       | Total Remaining Cost | FY 2021-22         | FY 2022-26          | Tax Revenue                    | ADP Contribution   | Tem/Pech Contribution | External Contribution |                           |
| <b>DESIGN AND CONSTRUCTION PROJECTS:</b> |         |                                       |                      |                    |                     |                                |                    |                       |                       |                           |
| 7-8-00065                                | 03      | TEMECULA CREEK - MORGAN VALLEY WASH   | \$1,133,795          | \$779,979          | \$353,816           | \$1,133,795                    | \$0                | \$0                   | \$0                   | \$0                       |
| 7-8-00075                                | 03      | WILDOMAR MDP LATERAL C                | 13,705,360           | 6,649,364          | 7,055,996           | 13,705,360                     | 0                  | 0                     | 0                     | 0                         |
| 7-8-00130                                | 90      | MURRIETA MDP LINE E RESTORATION       | 759,716              | 73,383             | 686,333             | 697,126                        | 62,590             | 0                     | 0                     | 0                         |
| <b>PLANNING PROJECTS:</b>                |         |                                       |                      |                    |                     |                                |                    |                       |                       |                           |
| 7-8-00133                                | 01      | MURRIETA CREEK MDP LINE A             | 4,018,000            | 0                  | 477,297             | 0                              | 477,297            | 0                     | 0                     | (3,540,703)               |
| 7-8-00190                                | 01      | TUCALOTA CREEK                        | 3,059,000            | 0                  | 189,265             | 0                              | 189,265            | 0                     | 0                     | (2,869,735)               |
| 7-8-00430                                | 90      | TEMECULA/PECHANGA CRK MISC SLOPE PAVI | 7,165,695            | 0                  | 7,165,695           | 6,557,132                      | 0                  | 608,563               | 0                     | 0                         |
| 7-8-00760                                | 03      | WARM SPRINGS CHANNEL                  | 2,800,000            | 0                  | 589,322             | 0                              | 589,322            | 0                     | 0                     | (2,210,678)               |
| 7-8-09015                                | 00      | MURRIETA CRK/WILDOMAR CH ROW IMPRV    | 141,635              | 0                  | 141,635             | 0                              | 141,635            | 0                     | 0                     | 0                         |
| <b>ZONE 7 TOTALS</b>                     |         |                                       | <b>\$32,783,201</b>  | <b>\$7,502,726</b> | <b>\$16,659,359</b> | <b>\$22,093,413</b>            | <b>\$1,460,109</b> | <b>\$608,563</b>      | <b>\$0</b>            | <b>(\$8,621,116)</b>      |

**FIVE YEAR CIP SUMMARY**

**FUND BALANCE FORWARD - JULY 1, 2021:**

|  |                     |
|--|---------------------|
| Zone 7 Fund                            | \$27,844,993        |
| Maintenance Sub Fund                   | 939,542             |
| ADP Sub Fund                           | 2,299,023           |
| Temecula/Pechanga Restoration Sub Fund | 608,563             |
| <b>Total Fund Balance Forward</b>      | <b>\$31,692,120</b> |

**REVENUE:**

|                                |                     |
|--------------------------------|---------------------|
| Taxes                          | \$33,434,894        |
| Interest                       | 1,950,504           |
| ADP Fees                       | 100,000             |
| Rental                         | 0                   |
| <b>Subtotal Revenue</b>        | <b>35,485,398</b>   |
| External Contribution          | 0                   |
| <b>Total Five Year Revenue</b> | <b>\$35,485,398</b> |
| <b>Total Funds Available</b>   | <b>\$67,177,518</b> |

**APPROPRIATIONS:**

|                                       |                     |
|---------------------------------------|---------------------|
| District Led Projects Appropriations  | \$24,162,085        |
| Partner Led Projects Appropriations   | 27,296,506          |
| Misc Watershed Protection Projects    | 500,000             |
| Capital Project Cost Inflation @ 2.0% | 483,242             |
| Operating & Maintenance Expenses      | 13,483,603          |
| Contingencies                         | 679,677             |
| <b>Subtotal Appropriations</b>        | <b>\$66,605,113</b> |

**ENDING FUND BALANCE - JUNE 30, 2026:**

|  |                  |
|--|------------------|
| Zone 7 Fund                            | \$23,068         |
| Maintenance Sub Fund                   | 234,885          |
| ADP Sub Fund                           | 314,452          |
| Temecula/Pechanga Restoration Sub Fund | 0                |
| <b>Total Ending Fund Balance</b>       | <b>\$572,405</b> |



**RIVERSIDE COUNTY FLOOD CONTROL AND WATER CONSERVATION DISTRICT  
PARTNER LED PROJECT SUMMARY - ZONE 7  
FISCAL YEARS 2021-22 THROUGH 2025-26**

| Project Number                                  | Stg No. | Project Title                    | Project Cost        | Project Appropriation |                                |                      |                                | Funding Sources     |                  |                          | Total Not District Funded |
|---|---------|----------------------------------|---------------------|-----------------------|--------------------------------|----------------------|--------------------------------|---------------------|------------------|--------------------------|---------------------------|
|   |         |                                  | Total               | FY 2021-22            |                                | FY 2022-26           |                                | 5-year total        |                  |                          |                           |
|   |         |                                  | Remaining Cost      | District Direct Cost  | Contribution to Partner Agency | District Direct Cost | Contribution to Partner Agency | Tax Revenue         | ADP Contribution | Maintenance Contribution |                           |
| <b>PARTNER LED CONTRIBUTION PROJECTS</b>        |         |                                  |                     |                       |                                |                      |                                |                     |                  |                          |                           |
| 7-6-10000                                       | 00      | DE PORTOLA DRAINAGE CHANNEL      | \$600,000           | \$0                   | \$600,000                      | \$0                  | \$0                            | \$600,000           | \$0              | \$0                      | \$0                       |
| <b>PARTNER LED CAPITAL IMPROVEMENT PROJECTS</b> |         |                                  |                     |                       |                                |                      |                                |                     |                  |                          |                           |
| 7-8-00021                                       | 00      | MURRIETA CREEK CH (PH Iib & III) | 90,250,506          | 204,053               | 2,500,000                      | 392,453              | 23,600,000                     | 26,072,044          | 624,462          | 0                        | (63,554,000)              |
| <b>PARTNER LED CONTRIBUTION PROJECTS</b>        |         |                                  | \$600,000           | \$0                   | \$600,000                      | \$0                  | \$0                            | \$600,000           | \$0              | \$0                      | \$0                       |
| <b>PARTNER LED CAPITAL IMPROVEMENT PROJECTS</b> |         |                                  | 90,250,506          | 204,053               | 2,500,000                      | 392,453              | 23,600,000                     | 26,072,044          | 624,462          | 0                        | (63,554,000)              |
| <b>ZONE 7 TOTALS</b>                            |         |                                  | <b>\$90,850,506</b> | <b>\$204,053</b>      | <b>\$3,100,000</b>             | <b>\$392,453</b>     | <b>\$23,600,000</b>            | <b>\$26,672,044</b> | <b>\$624,462</b> | <b>\$0</b>               | <b>(\$63,554,000)</b>     |



**Zone 7**  
**Report to the Zone Commissioners**  
By Jason E. Uhley, General Manager-Chief Engineer  
November 2021

## Active District-Led Projects

### Temecula Creek Morgan Valley Wash (7-8-00065-03)

This is a District-led improvement project to stabilize and restore the stream function of Morgan Valley Wash between Via Pascal and Woolpert Lane by installing approximately 800 lineal feet of toe and sideslope protection. The project also includes installing a 24" reinforced concrete pipe as a low-flow bypass to collect runoff at the Monte Verde Road culvert and convey the flows approximately 470 lineal feet westerly along Monte Verde Road before discharging into an existing 24" reinforced concrete pipe. The Project Charter was completed in February 2021. The District has initiated the design process and anticipates 30% design phase completion by March 2022.

### Wildomar MDP Lateral C (7-8-00075-03)

This is a District-led project to reduce flooding along Bundy Canyon Wash in the city of Wildomar. The project consists of a 19-acre detention basin (approximately 20 feet deep) at the southeast corner of Monte Vista Drive and Bundy Canyon Road to collect and attenuate flows from the 100-year storm. Additionally, 930 lineal feet of reinforced concrete box storm drain (predominantly 8'Hx14'W) will be constructed to convey flows from the basin southerly along Monte Vista Drive to an existing culvert crossing underneath Interstate 15. Construction of the project is fully funded by the District, and final plans are expected by June 2022.



**Zone 7  
Report to the Zone Commissioners  
November 2021**

## Active Partner-Led Projects

### De Portola Drainage Channel (7-6-10000)

This Riverside County Transportation Department-led project will address sediment issues along De Portola Road. The project consists of a sediment basin with a concrete lined slope only on the north side. The Riverside County Transportation Department is currently preparing 65% plans to send to utility companies. There are various telecoms and waterlines within the proposed "channel" area that will need to be relocated and may take a few months for the utility companies to develop relocation plans. Design is anticipated to be completed by winter 2021 with construction sometime in late summer or fall 2022. Fifty-five percent of the project is being funded by the District with the remainder being funded by the Riverside County Transportation Department.

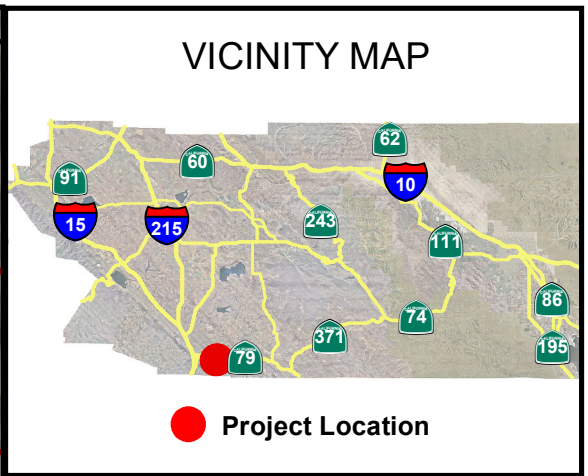
### Murrieta Creek Channel Phases IIb and III (7-8-00021-01)

This is a U.S. Army Corps of Engineers (Corps)-led project that is a drainage facility that will provide 100-year flood protection to portions of the cities of Murrieta and Temecula along Murrieta Creek. The overall Corps-led project is divided into multiple phases:

- Phase I - Channel improvements from the Front Street/Highway 79 south junction upstream to First Street (Temecula);
- Phase IIa - Channel improvements from First Street to Rancho California Road;
- Phase IIb - Channel improvements from Rancho California Road to Winchester Road;
- Phase III - The detention basin/environmental restoration/sports park (Murrieta/Temecula); and
- Phase IV - Channel improvements from the detention basin upstream to Vineyard Parkway (Murrieta).

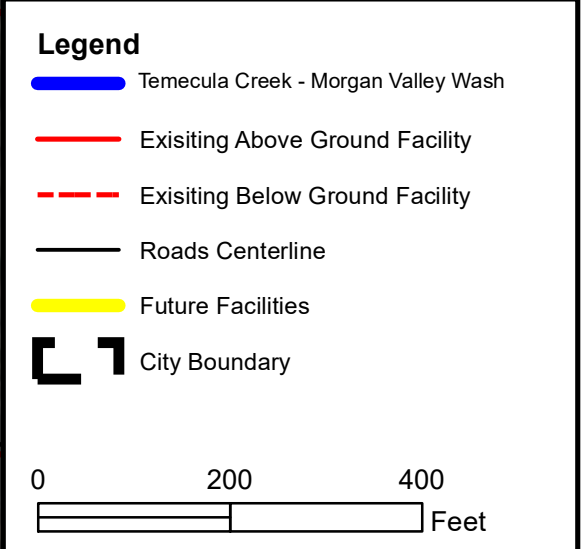
Phases I and IIa have been substantively completed (pending sediment removal by the Corps in Phases I and IIa). The District is currently working with the Corps to pursue funding for Phases IIb and III. The District is investigating options to assist the Corps in improving the cost-benefit ratio for the project to enable the Corps to secure the necessary funding, as well as investigating potential alternative delivery options that may allow the District and local partner agencies to take a larger role in the project to reduce costs and accelerate delivery. The project is also undergoing active construction activities including sediment removal (completion planned for December 1, 2021) and the completion of a headwall and overbank landscaping. The sediment removal consists of removing vegetation and sediment from the maintained portions of the channel within Phases I and IIa. The goal is to return the channel to its design capacity. Following this project and following the completion of the Operations and Maintenance (O&M) Manual, the Corps will turnover Phases I and IIa to the District for long-term operation and maintenance. The District will then be turning over the trails along the east and west bank of the channel within Phases I and IIa to the City of Temecula for operation and maintenance and public use of the trails. The necessary coordination efforts for the completion of the O&M Manual and trails turnover are ongoing.





**Description**

This is a District-led improvement project to stabilize and restore the stream function of Morgan Valley Wash between Via Pascal and Woolpert Lane by installing approximately 800 lineal feet of toe and sideslope protection. The project also includes installing a 24" reinforced concrete pipe as a low-flow bypass to collect runoff at the Monte Verde Road culvert and convey the flows approximately 470 lineal feet westerly along Monte Verde Road before discharging into an existing 24" reinforced concrete pipe.



Source: Esri, Maxar, GeoEye, Earthstar Geographics, CNES/Airbus DS, USDA, USGS, AeroGRID, IGN, and the GIS User Community



**RIVERSIDE COUNTY FLOOD CONTROL & WATER CONSERVATION DISTRICT**  
**Temecula Creek - Morgan Valley Wash**  
 Supervisorial District 3

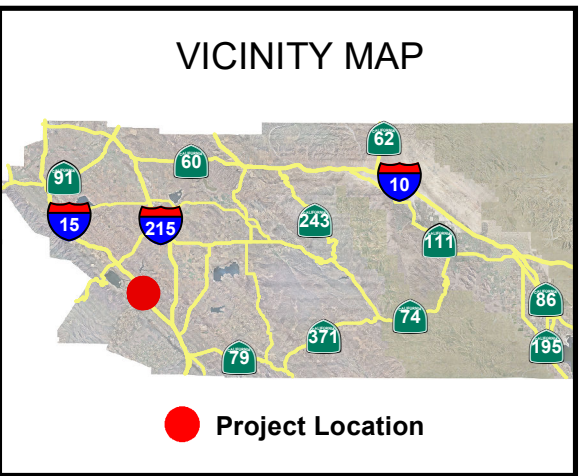


|              |                  |
|--------------|------------------|
| Project No.  | <b>7-8-00065</b> |
| Engineer     | <b>J. Shim</b>   |
| Date Created | <b>6/21/2021</b> |





Source: Esri, Maxar, GeoEye, Earthstar Geographics, CNES/Airbus DS, USDA, USGS, AeroGRID, IGN, and the GIS User Community



**Description**  
 This is a District-led project to reduce flooding along Bundy Canyon Wash in the city of Wildomar. The project consists of a 19-acre detention basin (approximately 20 feet deep) at the southeast corner of Monte Vista Drive and Bundy Canyon Road to collect and attenuate flows from the 100-year storm. Additionally, 930 lineal feet of reinforced concrete box storm drain (predominantly 8'Hx14'W) will be constructed to convey flows from the basin southerly along Monte Vista Drive to an existing culvert crossing underneath Interstate 15.

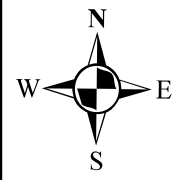
**Legend**

- Wildomar MDP Lateral C, Stage 3
- Existing Above Ground Facility
- Existing Below Ground Facility
- Roads Centerline
- Future Facilities
- City Boundary

0      400      800  
 Feet

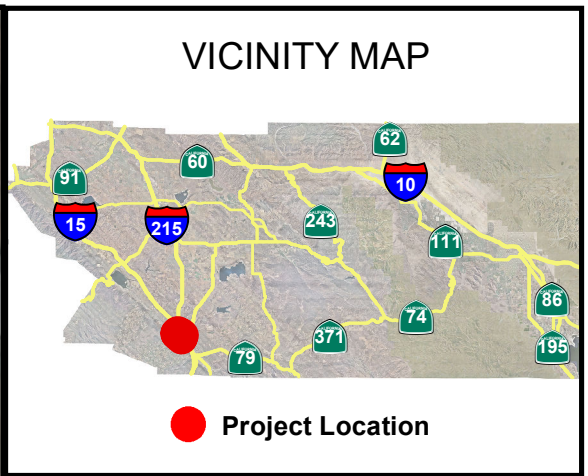
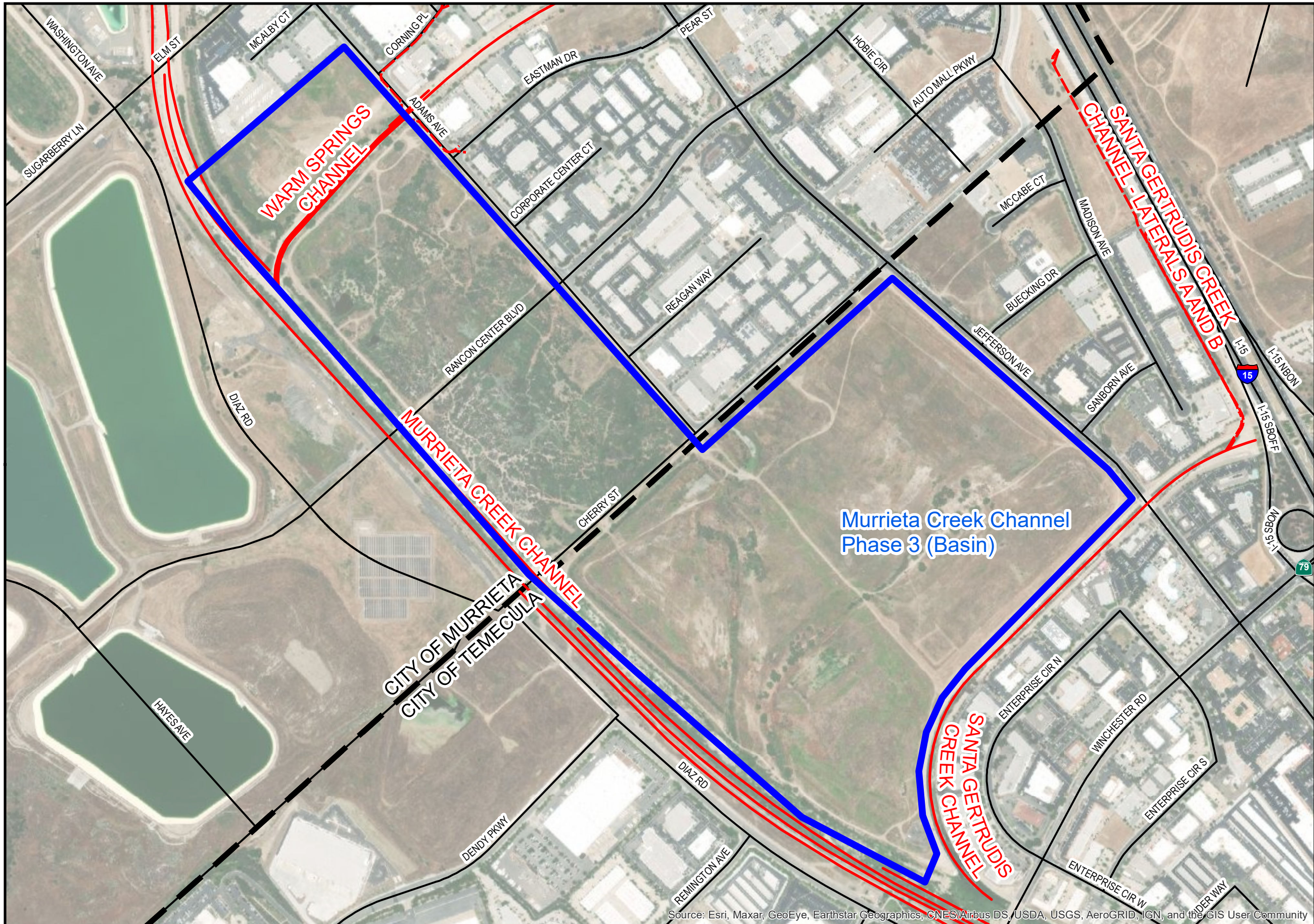


**RIVERSIDE COUNTY FLOOD CONTROL & WATER CONSERVATION DISTRICT**  
**Wildomar MDP Lateral C, Stage 3**  
 Supervisorial District 1



|              |                  |
|--------------|------------------|
| Project No.  | <b>7-8-00075</b> |
| Engineer     | <b>J. Shim</b>   |
| Date Created | <b>11/9/2021</b> |





### Description

This is a Corps-led project drainage facility that will provide 100-year flood protection to portions of the cities of Murrieta and Temecula along Murrieta Creek. The overall Corps-led project is divided into multiple phases. The District is currently working with the Corps to pursue Phase III - The detention basin/environmental restoration/sports park (Murrieta/Temecula).

### Legend

- Murrieta Creek Channel Phase 3 (Basin)
- Existing Above Ground Facility
- - - Existing Below Ground Facility
- Roads Centerline
- Future Facilities
- City Boundary

0      600      1,200  
Feet

Source: Esri, Maxar, GeoEye, Earthstar Geographics, CNES/Airbus DS, USDA, USGS, AeroGRID, IGN, and the GIS User Community

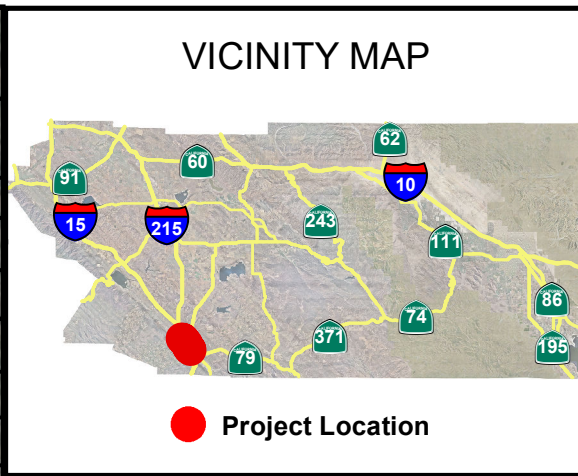
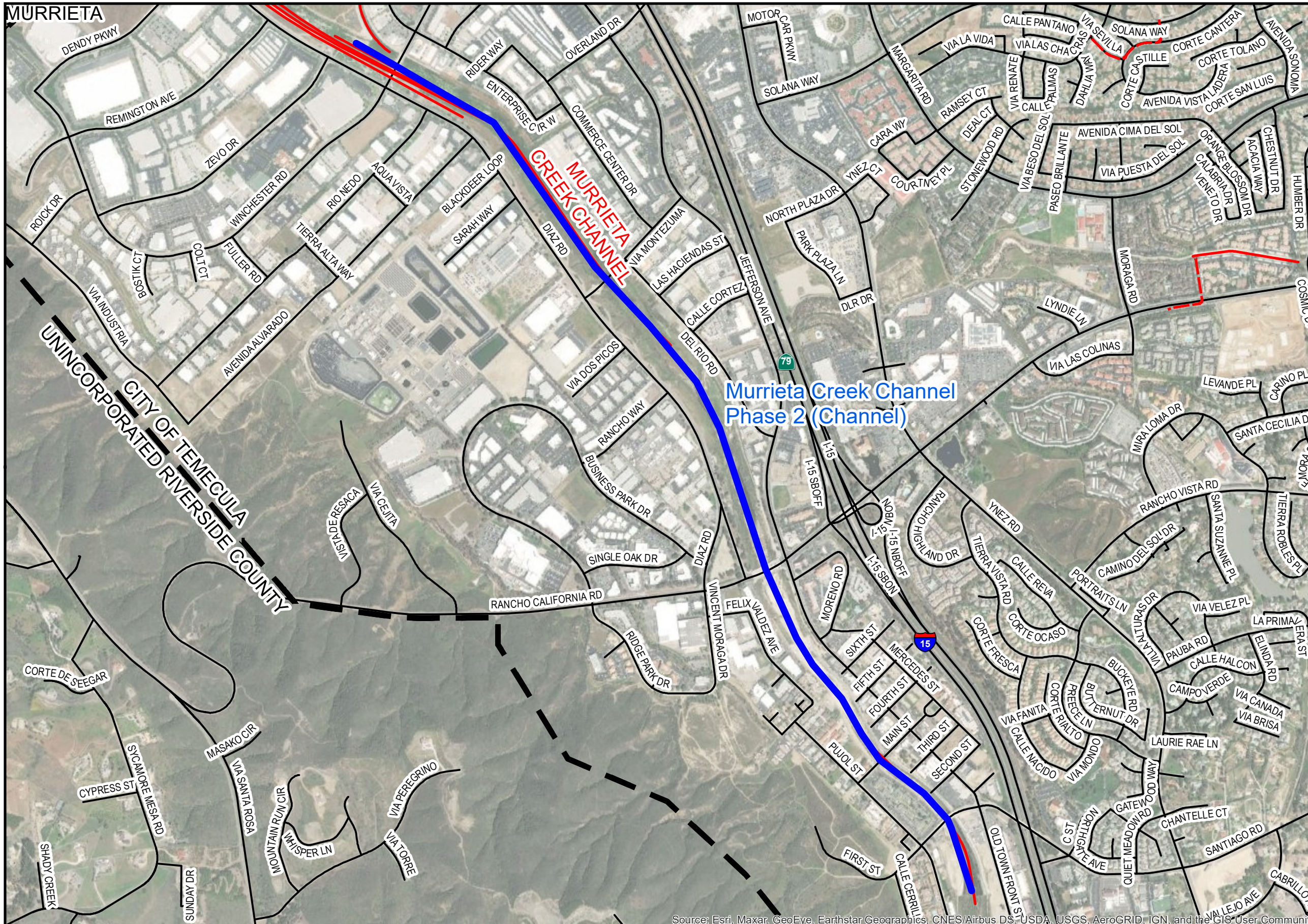


**RIVERSIDE COUNTY FLOOD CONTROL & WATER CONSERVATION DISTRICT**  
**Murrieta Creek Channel Phase 3 (Basin)**  
 Supervisorial District 3



|              |                    |
|--------------|--------------------|
| Project No.  | <b>7-8-00021</b>   |
| Engineer     | <b>E. Anguelov</b> |
| Date Created | <b>6/21/2021</b>   |





**Description**  
 This is a Corps-led project drainage facility that will provide 100-year flood protection to portions of the cities of Murrieta and Temecula along Murrieta Creek. The overall Corps-led project is divided into multiple phases. The District is currently working with the Corps to pursue Phase IIb - Channel improvements from Rancho California Road to Winchester Road.

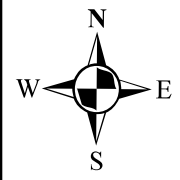
**Legend**

- Murrieta Creek Channel Phase 2 (Channel)
- Existing Above Ground Facility
- - - Existing Below Ground Facility
- Roads Centerline
- Future Facilities
- City Boundary

0      1,200      2,400  
 Feet



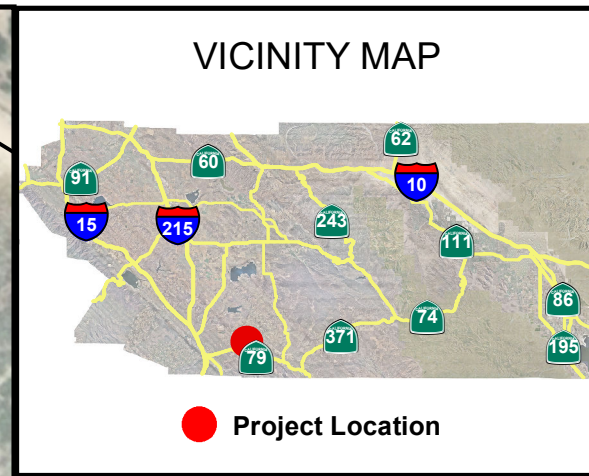
**RIVERSIDE COUNTY FLOOD CONTROL & WATER CONSERVATION DISTRICT**  
**Murrieta Creek Channel Phase 2 (Channel)**  
 Supervisorial District 3



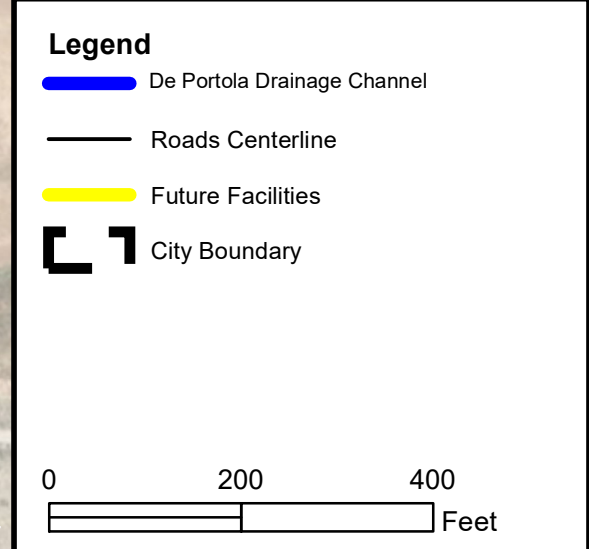
|              |                    |
|--------------|--------------------|
| Project No.  | <b>7-8-00021</b>   |
| Engineer     | <b>E. Anguelov</b> |
| Date Created | <b>6/21/2021</b>   |

Source: Esri, Maxar, GeoEye, Earthstar Geographics, CNES/Airbus DS, USDA, USGS, AeroGRID, IGN, and the GIS User Community





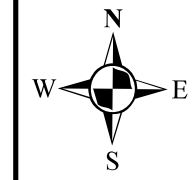
**Description**  
 Riverside County Transportation Department led project that will address sediment issues along De Portola Road. The projects consist of a sediment basin with a concrete lined slope only on the north side.



Source: Esri, Maxar, GeoEye, Earthstar Geographics, CNES/Airbus DS, USDA, USGS, AeroGRID, IGN, and the GIS User Community



**RIVERSIDE COUNTY FLOOD CONTROL & WATER CONSERVATION DISTRICT**  
**De Portola Drainage Channel**  
 Supervisorial District 3



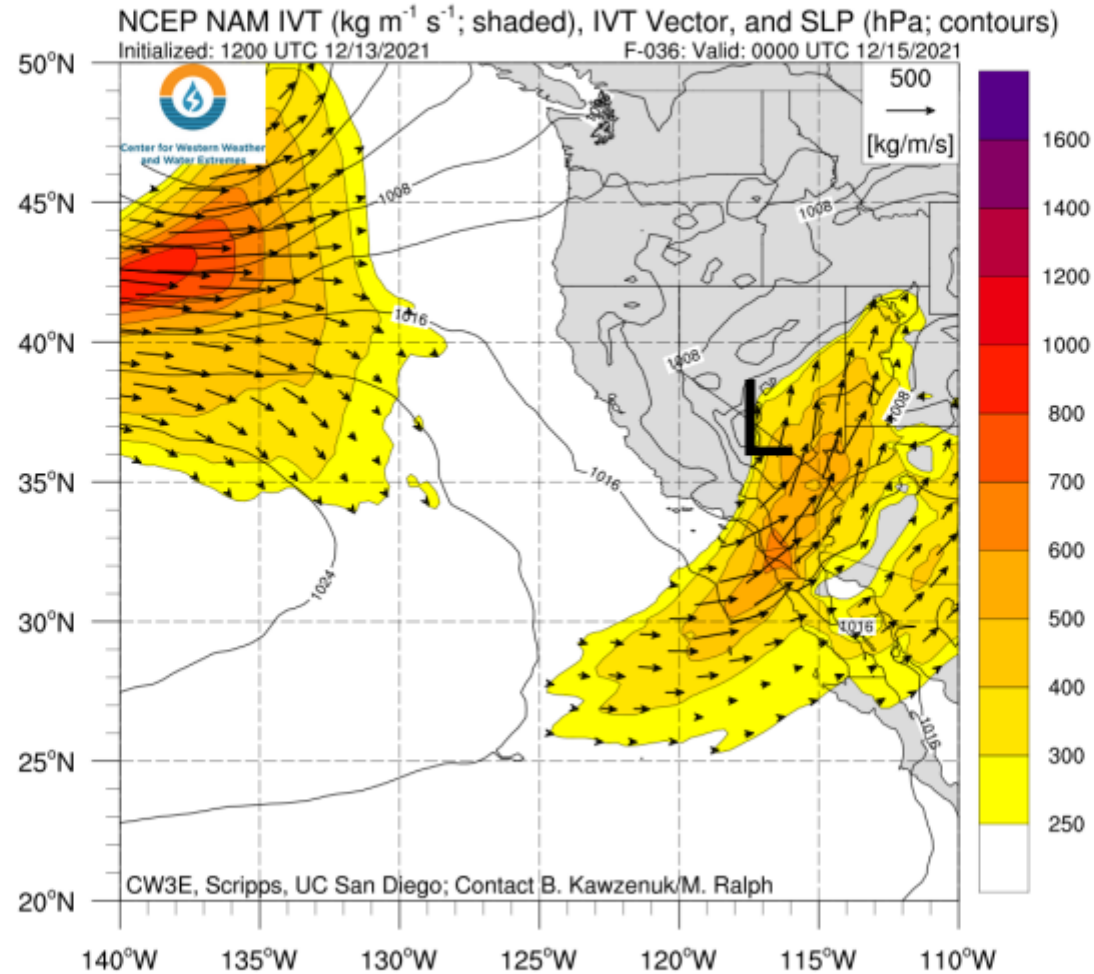
|              |                   |
|--------------|-------------------|
| Project No.  | <b>7-6-10000</b>  |
| Engineer     | <b>R. Johnson</b> |
| Date Created | <b>6/21/2021</b>  |





# Rain Band

## At 4 pm PST Tuesday



Building a Weather-Ready Nation





# Holy, Cranston, Tenaja, and Reche Fires Dashboard

Updated at: 12/14/2021, 5:37:55 PM Next update in 56 seconds.

Show Thresholds Legend Open Map Open Webcams page Open Webcams Timelapse page Open All pages Font Size: Medium Rain rates: Maximum in last 24 Hours

## HOLY FIRE

| Site - Duration                                   | Minutes           |                   | Hour(s)           |          |          |          | Day      | Depth                    |
|---|-------------------|-------------------|-------------------|----------|----------|----------|----------|--------------------------|
|   | 15                | 30                | 1                 | 3        | 6        | 24       | 7        | Sensor                   |
| <b>Threshold: Level 3 (Red)</b>                   | <b>≥ 0.30 in.</b> | <b>≥ 0.50 in.</b> | <b>≥ 0.80 in.</b> | n/a      | n/a      | n/a      | n/a      |                          |
| Coldwater Canyon                                  | 0.47 in.          | 0.79 in.          | 1.22 in.          | 2.56 in. | 4.09 in. | 5.67 in. | 6.34 in. | <a href="#">3.09 ft.</a> |
| Temescal Canyon                                   | 0.20 in.          | 0.28 in.          | 0.43 in.          | 0.98 in. | 1.57 in. | 2.13 in. | 2.28 in. | n/a                      |
| Horsethief Canyon                                 | 0.28 in.          | 0.43 in.          | 0.75 in.          | 1.93 in. | 3.31 in. | 4.80 in. | 5.47 in. | 0.00 ft.                 |
| Rice Canyon (See Horsethief Canyon for Rain Data) | n/a               | n/a               | n/a               | n/a      | n/a      | n/a      | n/a      | 0.00 ft.                 |
| North Elsinore                                    | 0.12 in.          | 0.20 in.          | 0.31 in.          | 0.75 in. | 1.26 in. | 1.73 in. | 1.85 in. | n/a                      |
| McVicker Canyon                                   | 0.12 in.          | 0.16 in.          | 0.28 in.          | 0.55 in. | 1.02 in. | 1.50 in. | 1.93 in. | 0.00 ft.                 |
| Leach Canyon                                      | 0.20 in.          | 0.35 in.          | 0.59 in.          | 1.42 in. | 2.40 in. | 3.46 in. | 3.90 in. | 0.00 ft.                 |
| Elsinore NWS Automatic                            | 0.07 in.          | 0.21 in.          | 0.31 in.          | 0.65 in. | 1.02 in. | 1.22 in. | 1.26 in. | n/a                      |
| <b>Threshold: Level 3 (Red)</b>                   | <b>≥ 0.25 in.</b> | <b>≥ 0.35 in.</b> | <b>≥ 0.65 in.</b> | n/a      | n/a      | n/a      | n/a      |                          |
| Indian Canyon                                     | 0.20 in.          | 0.28 in.          | 0.47 in.          | 1.10 in. | 2.05 in. | 3.03 in. | 3.70 in. | 0.00 ft.                 |
| Indian Truck Trail                                | 0.20 in.          | 0.28 in.          | 0.51 in.          | 1.06 in. | 1.65 in. | 2.13 in. | 2.32 in. | n/a                      |

## CRANSTON FIRE

| Site - Duration                 | Minutes           |                   | Hour(s)          |          |          |          | Day      | Depth  |
|---------------------------------|-------------------|-------------------|------------------|----------|----------|----------|----------|--------|
|                                 | 15                | 30                | 1                | 3        | 6        | 24       | 7        | Sensor |
| <b>Threshold: Level 3 (Red)</b> | <b>≥ 0.50 in.</b> | <b>≥ 0.77 in.</b> | <b>≥ 1.5 in.</b> | n/a      | n/a      | n/a      | n/a      |        |
| Hurkey Creek Park NWS Automatic | 0.00 in.          | 0.00 in.          | 0.07 in.         | 0.23 in. | 0.30 in. | 0.32 in. | 0.35 in. | n/a    |
| Idyllwild Transfer Station      | 0.05 in.          | 0.10 in.          | 0.24 in.         | 0.75 in. | 0.98 in. | 1.17 in. | 2.02 in. | n/a    |
| Idyllwild NWS Automatic         | 0.03 in.          | 0.09 in.          | 0.24 in.         | 0.71 in. | 0.96 in. | 1.27 in. | 2.26 in. | n/a    |

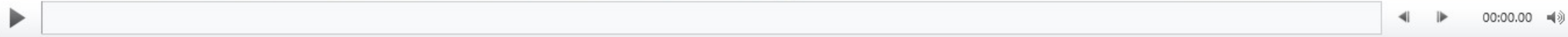
## TENAJA FIRE

| Site - Duration                 | Minutes           |                   | Hour(s)           |                   |                   |          | Day      | Depth  |
|---------------------------------|-------------------|-------------------|-------------------|-------------------|-------------------|----------|----------|--------|
|                                 | 15                | 30                | 1                 | 3                 | 6                 | 24       | 7        | Sensor |
| <b>Threshold: Level 3 (Red)</b> | <b>≥ 0.20 in.</b> | <b>≥ 0.30 in.</b> | <b>≥ 0.50 in.</b> | <b>≥ 0.95 in.</b> | <b>≥ 1.47 in.</b> | n/a      | n/a      |        |
| Sylvan Meadows                  | 0.24 in.          | 0.43 in.          | 0.75 in.          | 1.93 in.          | 2.80 in.          | 3.66 in. | 3.82 in. | n/a    |
| Murrieta Creek                  | 0.12 in.          | 0.20 in.          | 0.43 in.          | 1.02 in.          | 1.42 in.          | 1.85 in. | 1.89 in. | n/a    |
| Wildomar                        | 0.05 in.          | 0.18 in.          | 0.37 in.          | 1.04 in.          | 1.57 in.          | 2.13 in. | 2.22 in. | n/a    |

## RECHE FIRE

| Site - Duration                 | Minutes           |                   | Hour(s)           |                   |                   |          | Day      | Depth  |
|---------------------------------|-------------------|-------------------|-------------------|-------------------|-------------------|----------|----------|--------|
|                                 | 15                | 30                | 1                 | 3                 | 6                 | 24       | 7        | Sensor |
| <b>Threshold: Level 3 (Red)</b> | <b>≥ 0.20 in.</b> | <b>≥ 0.30 in.</b> | <b>≥ 0.50 in.</b> | <b>≥ 0.95 in.</b> | <b>≥ 1.47 in.</b> | n/a      | n/a      |        |
| Reche Canyon                    | 0.06 in.          | 0.14 in.          | 0.22 in.          | 0.49 in.          | 0.70 in.          | 0.97 in. | 1.19 in. | n/a    |









Rain Rates Grid / Webcams View Map / Webcams View Rain Rates Grid / Map View

| Below 4000 ft.           | Minutes  |          | Hour(s)  |          |          |          | Day      |
|--------------------------|----------|----------|----------|----------|----------|----------|----------|
|                          | 15       | 30       | 1        | 3        | 6        | 24       |          |
| Site - Duration          | 15       | 30       | 1        | 3        | 6        | 24       | 7        |
| Threshold: Level 3 (Red) | ≥ 0.30   | ≥ 0.60   | ≥ 0.80   | n/a      | n/a      | n/a      | n/a      |
| Beaumont City            | 0.16 in. | 0.28 in. | 0.39 in. | 0.63 in. | 0.91 in. | 1.18 in. | 0.00 in. |
| Banning Bench            | 0.16 in. | 0.24 in. | 0.39 in. | 0.59 in. | 1.06 in. | 1.57 in. | 0.00 in. |
| Cabazon North            | 0.16 in. | 0.24 in. | 0.43 in. | 0.94 in. | 1.26 in. | 1.50 in. | 0.00 in. |
| Calimesa                 | 0.12 in. | 0.20 in. | 0.31 in. | 0.59 in. | 0.94 in. | 1.38 in. | 0.00 in. |
| Bogart Park              | 0.20 in. | 0.28 in. | 0.43 in. | 0.75 in. | 1.06 in. | 1.61 in. | 0.00 in. |
| Morongo Reservation      | 0.08 in. | 0.16 in. | 0.24 in. | 0.51 in. | 0.79 in. | 1.30 in. | 0.00 in. |
| Tick Ridge               | 0.24 in. | 0.24 in. | 0.35 in. | 0.75 in. | 1.18 in. | 1.50 in. | 0.00 in. |
| Whitewater Trout Farm    | 0.08 in. | 0.16 in. | 0.24 in. | 0.55 in. | 0.91 in. | 1.18 in. | 0.00 in. |

| Above 4000 ft.             | Minutes  |          | Hour(s)  |          |          |          | Day      |
|----------------------------|----------|----------|----------|----------|----------|----------|----------|
|                            | 15       | 30       | 1        | 3        | 6        | 24       |          |
| Site - Duration            | 15       | 30       | 1        | 3        | 6        | 24       | 7        |
| Threshold: Level 3 (Red)   | ≥ 0.30   | ≥ 0.40   | ≥ 0.60   | n/a      | n/a      | n/a      | n/a      |
| Oak Glen Conservation Camp | 0.20 in. | 0.35 in. | 0.55 in. | 1.02 in. | 1.93 in. | 2.68 in. | 0.00 in. |
| Oak Glen Fire (SBC)        | 0.08 in. | 0.12 in. | 0.16 in. | 0.35 in. | 0.59 in. | 1.06 in. | 0.00 in. |
| Raywood Flats              | 0.24 in. | 0.39 in. | 0.71 in. | 1.54 in. | 1.97 in. | 2.24 in. | 0.00 in. |
| Yucaipa Ridge (SBC)        | 0.00 in. | 0.00 in. | 0.00 in. | 0.00 in. | 0.00 in. | 0.00 in. | 0.00 in. |
| Camp Angelus (SBC)         | 0.24 in. | 0.28 in. | 0.39 in. | 0.94 in. | 1.57 in. | 4.06 in. | 0.00 in. |

| Snow Creek               | Minutes  |          | Hour(s)  |          |          |          | Day      |
|--------------------------|----------|----------|----------|----------|----------|----------|----------|
|                          | 15       | 30       | 1        | 3        | 6        | 24       |          |
| Site - Duration          | 15       | 30       | 1        | 3        | 6        | 24       | 7        |
| Threshold: Level 3 (Red) | ≥ 0.50   | ≥ 0.90   | ≥ 1.50   | n/a      | n/a      | n/a      | n/a      |
| Snow Creek Lower         | 0.24 in. | 0.35 in. | 0.63 in. | 1.38 in. | 2.09 in. | 2.52 in. | 0.00 in. |
| Snow Creek W Fork        | 0.16 in. | 0.31 in. | 0.47 in. | 1.06 in. | 1.50 in. | 1.77 in. | 0.00 in. |
| Windy Point              | 0.00 in. | 0.00 in. | 0.00 in. | 0.35 in. | 0.79 in. | 1.06 in. | 0.00 in. |









NOBLE CREEK 1 - 2021-12-14 13:31:53 - Riverside County Flood Control



15M: 0.12 30M: 0.31 1H: 0.51 3H: 0.98 6H: 1.93 1D: 2.48 7D: 3.23 (OGCC)



# Zone 7 Budget Hearing

December 15, 2021



## **For public attendees joining via TEAMS:**

- Please keep your microphone muted until called upon.
- Handouts can be accessed from:
  - [www.rcflood.org/cip](http://www.rcflood.org/cip)





Available  
Funding

**Sunita Jain**

Administrative Services Supervisor





# ZONE 7

**ERIC CROUTERS**, 3rd District  
**VINCENT SCARPINO**, 1st District  
**STEVEN MARTIN BUSCH**, 3rd District

The demand for infrastructure generally outpaces available financial resources leaving many unmet needs.

The district must consider public safety above all else, but also strive to develop the most economical project possible consistent with this obligation.

The available fund balance usually makes up the difference if projected revenue does not cover projected appropriations.



## Fund Balance for FY 2020–2021

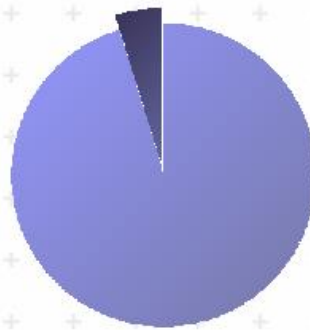
JULY 1, 2020 \$29,159,930

JUNE 30, 2021 \$31,128,176

### Sources

*(Where the money comes from)*

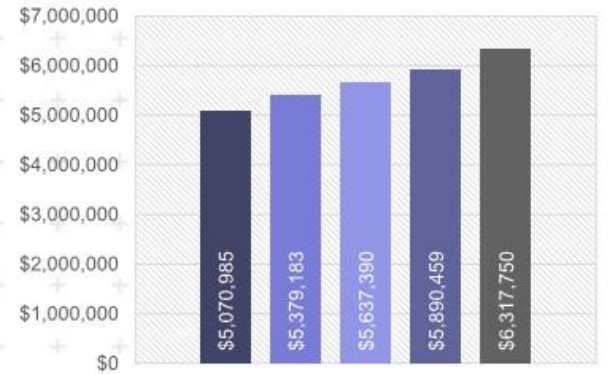
TOTAL \$6,635,000



Other - 5% \$317,000  
Property Taxes - 95% \$6,318,000

### Property Taxes

*(5 year trend)*

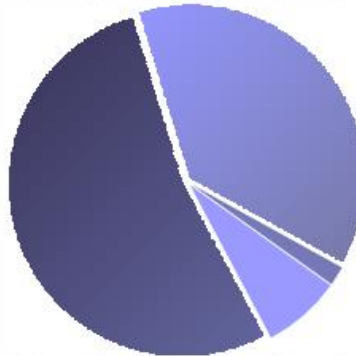


6/30/2017 6/30/2018 6/30/2019 6/30/2020 6/30/2021

### Expenditures

*(Where the money is spent)*

TOTAL \$4,667,000

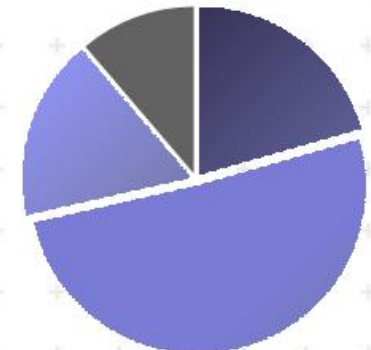


Services & supplies - 38% \$1,763,000  
Salaries & Benefits - 53% \$2,475,000  
Other - 2% \$85,000  
Capital - 7% \$344,000

### Uses

*(How the money is used)*

TOTAL \$4,667,000



Administration - 11% \$525,000  
Maintenance - 21% \$960,000  
District Led Projects - 51% \$2,374,000  
General Zone Work - 17% \$808,000



**Existing  
Commit-  
ments**

**Claudio Padres**

Chief of Design and Construction

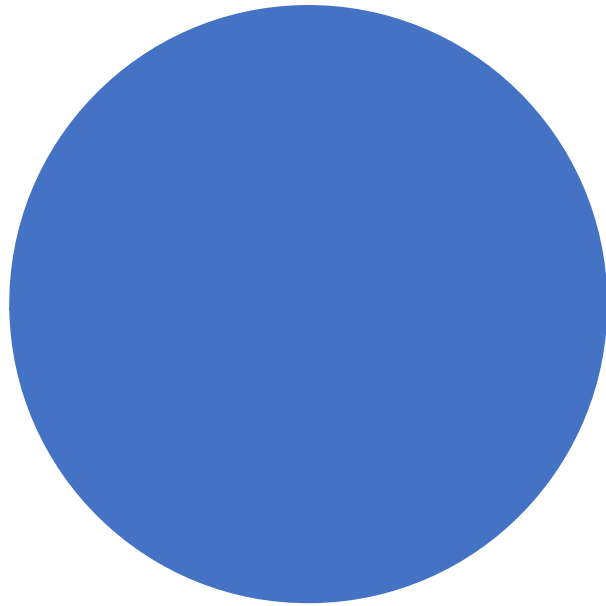


# Estimates from last February



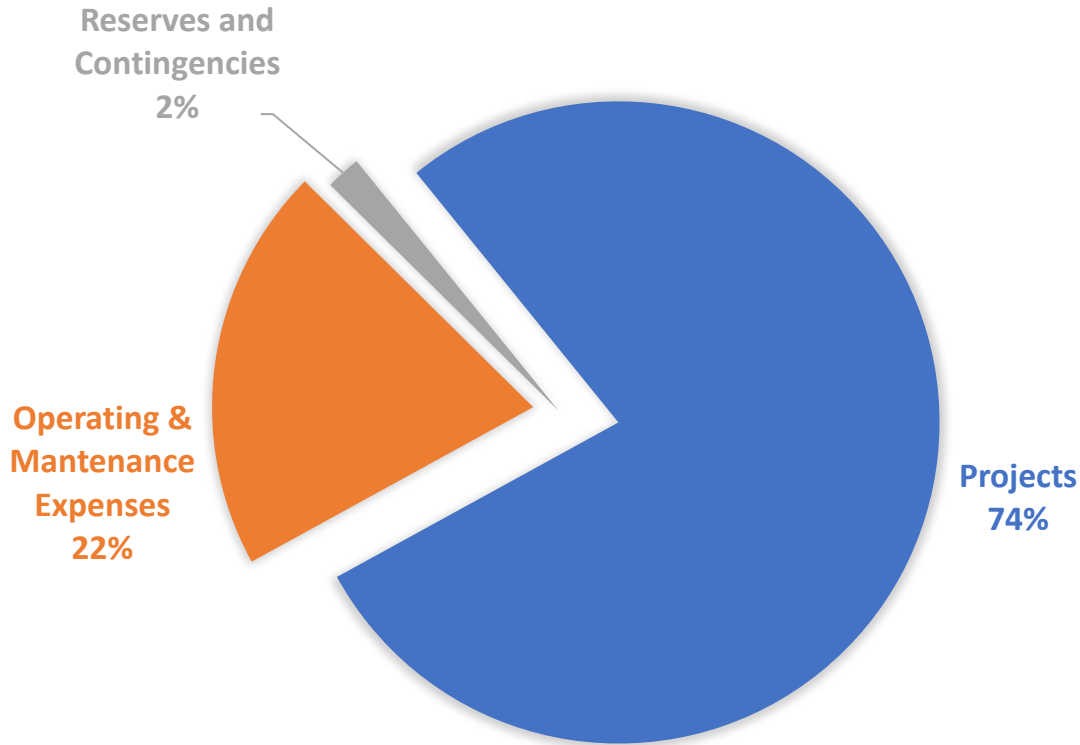


Estimates from last February





# 5-Year Allocations per CIP



**5-year Project Allocation =**

- **\$51.4M**
- **10 Projects**



**RIVERSIDE COUNTY FLOOD CONTROL AND WATER CONSERVATION DISTRICT**  
**DISTRICT LED PROJECT SUMMARY - ZONE 7**  
**FISCAL YEARS 2021-22 THROUGH 2025-26**

| Project Number                           | Stg No. | Project Title                         | Project Cost         | Appropriation      |                     | Funding Sources (5-Year Total) |                    |                       |                       | Total Not District Funded |
|--|---------|---------------------------------------|----------------------|--------------------|---------------------|--------------------------------|--------------------|-----------------------|-----------------------|---------------------------|
|  |         |                                       | Total Remaining Cost | FY 2021-22         | FY 2022-26          | Tax Revenue                    | ADP Contribution   | Tem/Pech Contribution | External Contribution |                           |
| <b>DESIGN AND CONSTRUCTION PROJECTS:</b> |         |                                       |                      |                    |                     |                                |                    |                       |                       |                           |
| 7-8-00065                                | 03      | TEMECULA CREEK - MORGAN VALLEY WASH   | \$1,133,795          | \$779,979          | \$353,816           | \$1,133,795                    | \$0                | \$0                   | \$0                   | \$0                       |
| 7-8-00075                                | 03      | WILDOMAR MDP LATERAL C                | 13,705,360           | 6,649,364          | 7,055,996           | 13,705,360                     | 0                  | 0                     | 0                     | 0                         |
| 7-8-00130                                | 90      | MURRIETA MDP LINE E RESTORATION       | 759,716              | 73,383             | 686,333             | 697,126                        | 62,590             | 0                     | 0                     | 0                         |
| <b>PLANNING PROJECTS:</b>                |         |                                       |                      |                    |                     |                                |                    |                       |                       |                           |
| 7-8-00133                                | 01      | MURRIETA CREEK MDP LINE A             | 4,018,000            | 0                  | 477,297             | 0                              | 477,297            | 0                     | 0                     | (3,540,703)               |
| 7-8-00190                                | 01      | TUCALOTA CREEK                        | 3,059,000            | 0                  | 189,265             | 0                              | 189,265            | 0                     | 0                     | (2,869,735)               |
| 7-8-00430                                | 90      | TEMECULA/PECHANGA CRK MISC SLOPE PAVI | 7,165,695            | 0                  | 7,165,695           | 6,557,132                      | 0                  | 608,563               | 0                     | 0                         |
| 7-8-00760                                | 03      | WARM SPRINGS CHANNEL                  | 2,800,000            | 0                  | 589,322             | 0                              | 589,322            | 0                     | 0                     | (2,210,678)               |
| 7-8-09015                                | 00      | MURRIETA CRK/WILDOMAR CH ROW IMPRV    | 141,635              | 0                  | 141,635             | 0                              | 141,635            | 0                     | 0                     | 0                         |
| <b>ZONE 7 TOTALS</b>                     |         |                                       | <b>\$32,783,201</b>  | <b>\$7,502,726</b> | <b>\$16,659,359</b> | <b>\$22,093,413</b>            | <b>\$1,460,109</b> | <b>\$608,563</b>      | <b>\$0</b>            | <b>(\$8,621,116)</b>      |

**FIVE YEAR CIP SUMMARY**

**FUND BALANCE FORWARD - JULY 1, 2021:**

|  |                     |
|--|---------------------|
| Zone 7 Fund                            | \$27,844,993        |
| Maintenance Sub Fund                   | 939,542             |
| ADP Sub Fund                           | 2,299,023           |
| Temecula/Pechanga Restoration Sub Fund | 608,563             |
| <b>Total Fund Balance Forward</b>      | <b>\$31,692,120</b> |

**REVENUE:**

|                                |                     |
|--------------------------------|---------------------|
| Taxes                          | \$33,434,894        |
| Interest                       | 1,950,504           |
| ADP Fees                       | 100,000             |
| Rental                         | 0                   |
| <b>Subtotal Revenue</b>        | <b>35,485,398</b>   |
| External Contribution          | 0                   |
| <b>Total Five Year Revenue</b> | <b>\$35,485,398</b> |
| <b>Total Funds Available</b>   | <b>\$67,177,518</b> |

**APPROPRIATIONS:**

|                                       |                     |
|---------------------------------------|---------------------|
| District Led Projects Appropriations  | \$24,162,085        |
| Partner Led Projects Appropriations   | 27,296,506          |
| Misc Watershed Protection Projects    | 500,000             |
| Capital Project Cost Inflation @ 2.0% | 483,242             |
| Operating & Maintenance Expenses      | 13,483,603          |
| Contingencies                         | 679,677             |
| <b>Subtotal Appropriations</b>        | <b>\$66,605,113</b> |

**ENDING FUND BALANCE - JUNE 30, 2026:**

|  |                  |
|--|------------------|
| Zone 7 Fund                            | \$23,068         |
| Maintenance Sub Fund                   | 234,885          |
| ADP Sub Fund                           | 314,452          |
| Temecula/Pechanga Restoration Sub Fund | 0                |
| <b>Total Ending Fund Balance</b>       | <b>\$572,405</b> |



**Zone 7**  
**Report to the Zone Commissioners**  
By Jason E. Uhley, General Manager-Chief Engineer  
November 2021

## Active District-Led Projects

### Temecula Creek Morgan Valley Wash (7-8-00065-03)

This is a District-led improvement project to stabilize and restore the stream function of Morgan Valley Wash between Via Pascal and Woolpert Lane by installing approximately 800 lineal feet of toe and sideslope protection. The project also includes installing a 24" reinforced concrete pipe as a low-flow bypass to collect runoff at the Monte Verde Road culvert and convey the flows approximately 470 lineal feet westerly along Monte Verde Road before discharging into an existing 24" reinforced concrete pipe. The Project Charter was completed in February 2021. The District has initiated the design process and anticipates 30% design phase completion by March 2022.

### Wildomar MDP Lateral C (7-8-00075-03)

This is a District-led project to reduce flooding along Bundy Canyon Wash in the city of Wildomar. The project consists of a 19-acre detention basin (approximately 20 feet deep) at the southeast corner of Monte Vista Drive and Bundy Canyon Road to collect and attenuate flows from the 100-year storm. Additionally, 930 lineal feet of reinforced concrete box storm drain (predominantly 8'Hx14'W) will be constructed to convey flows from the basin southerly along Monte Vista Drive to an existing culvert crossing underneath Interstate 15. Construction of the project is fully funded by the District, and final plans are expected by June 2022.



The background is a blurred image of a pen writing on a document. A line graph is visible, with a peak and a trough. The number '5' is on the left, and '2,47' is on the right. The text 'Recent Trends and Activity' is centered in white.

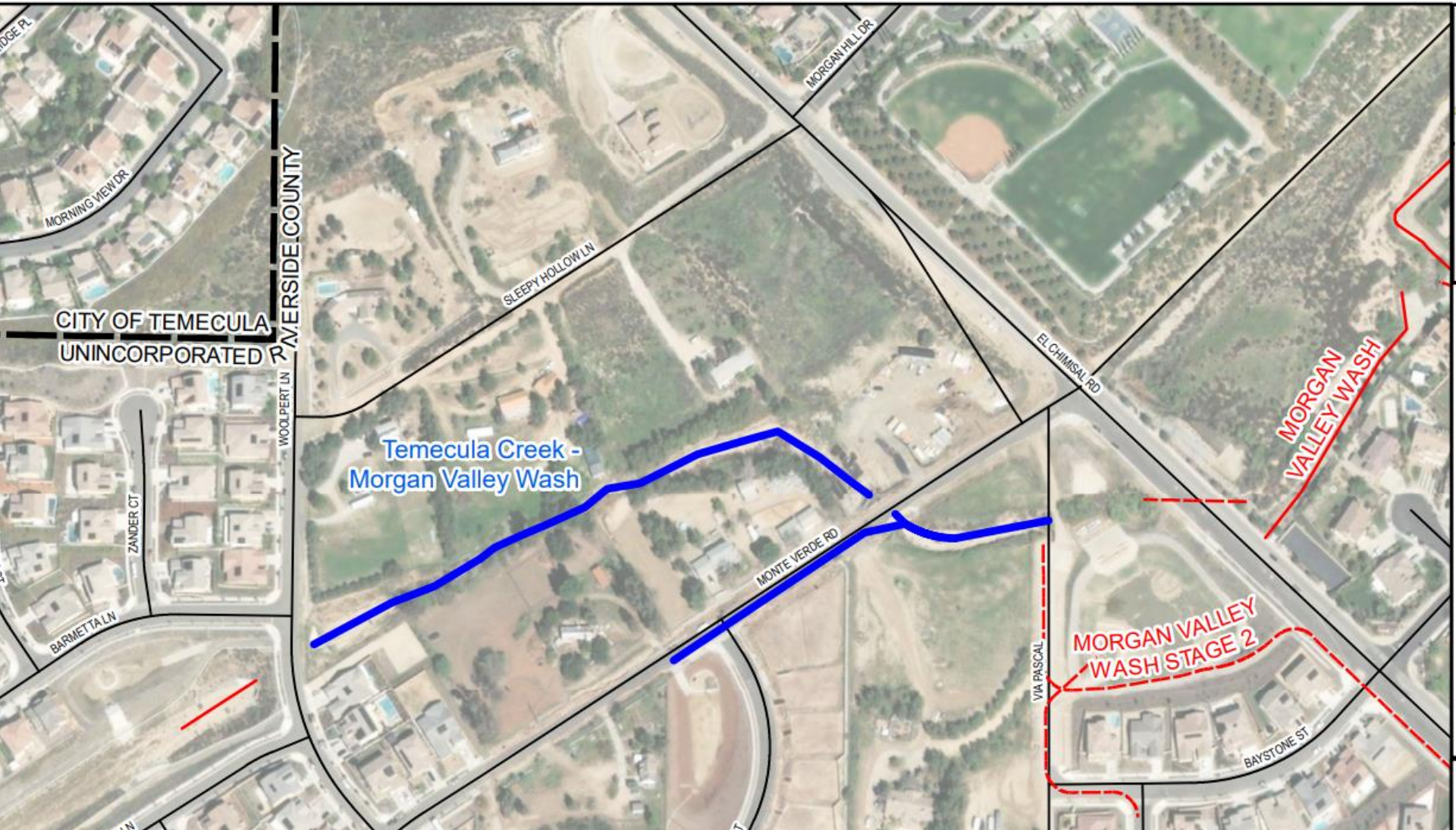
# Recent Trends and Activity





# Wildomar Lateral C





# Morgan Valley Wash





## Morgan Valley Wash

- Updated Mapping Complete
- 2D Modeling Underway
- Un-conventional approach
- Existing commitment \$1.1M



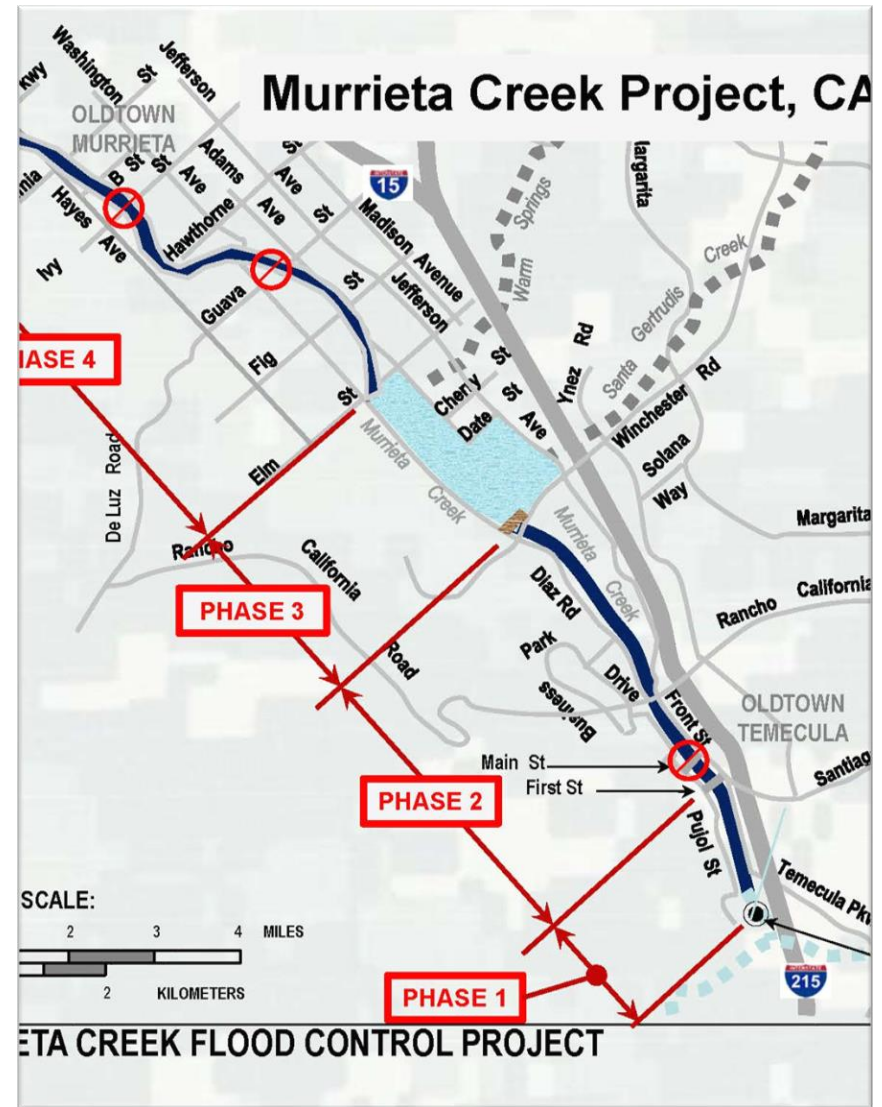


# De Portola Channel



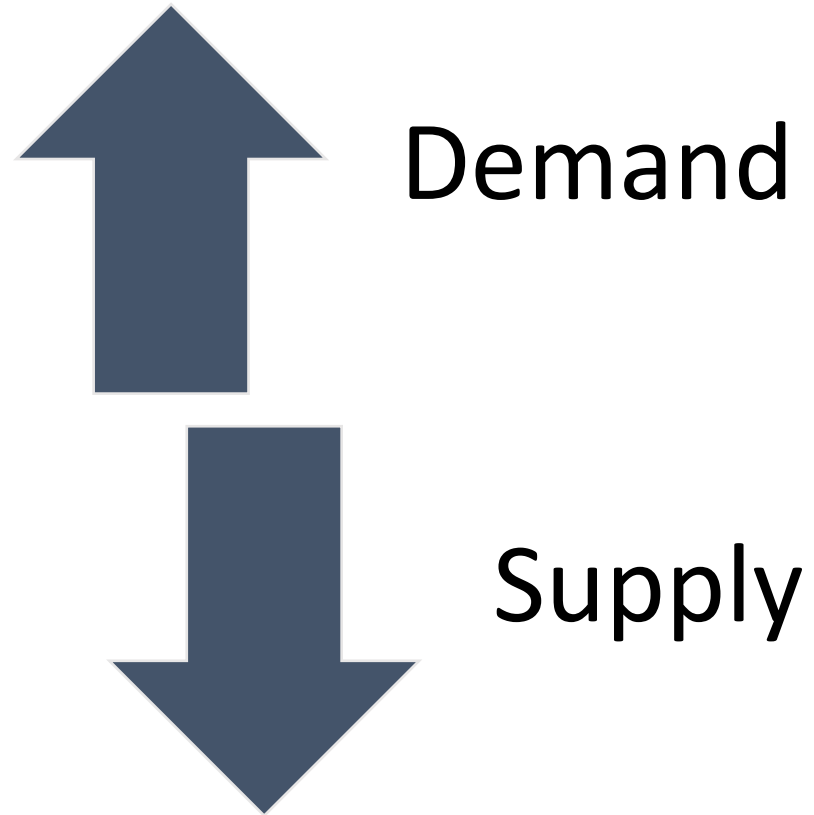
# MURRIETA CREEK CHANNEL

- Phase 1 and 2a complete
  - Pending transfer from Corps
- Phase IIb and III - Working with the Corps to pursue funding.





## Recent Issues



- Construction Costs
  - 15-30% increase
- Construction Delays
  - 3-8 month lead times

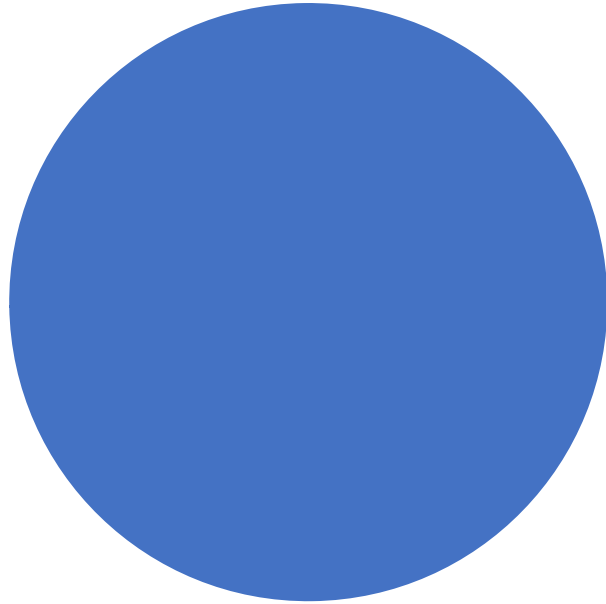


# New CIP Development

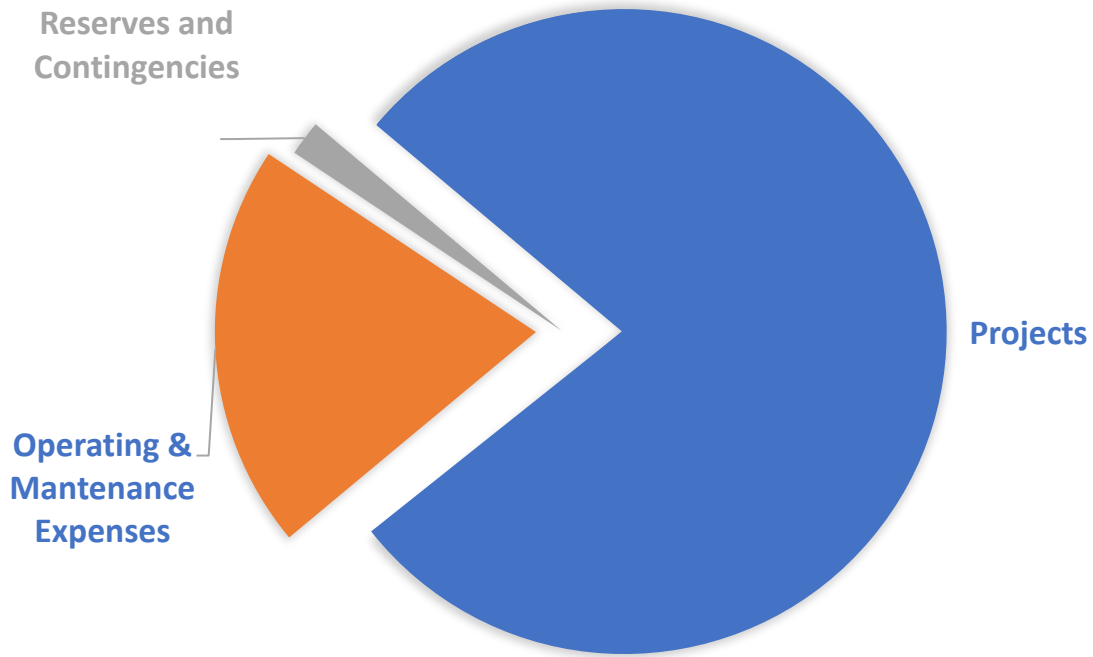




# New CIP Development

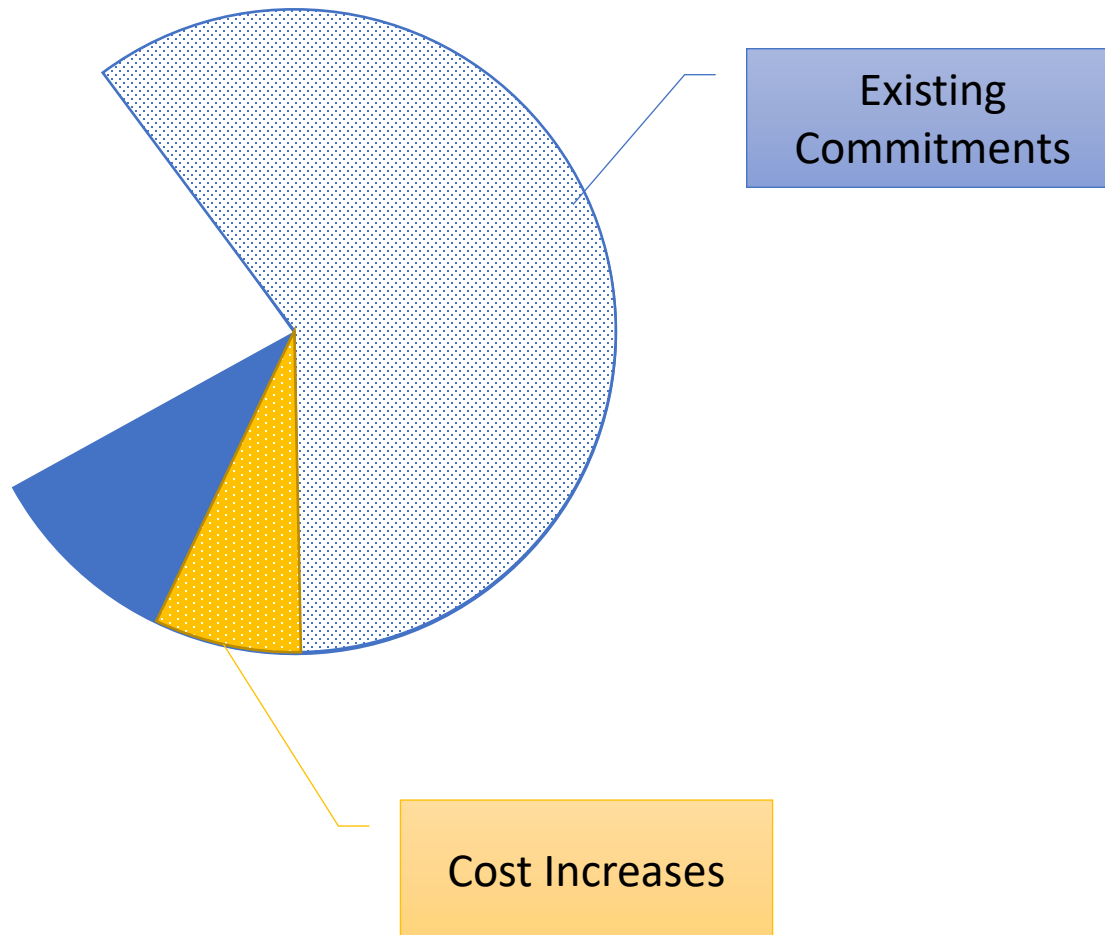


# New CIP Development





# New CIP Development





**Requests already received**



# Requests Received *(to date)*

## City of Temecula

- Butterfield Stage Road Storm Drain  
~\$3M

## Eastern Municipal Water District

- 1 New Funding Request (\$ amount not provided)

## City of Wildomar

- 1 New – Wildomar Lateral C  
Downstream of I-15 ~\$17.8M



**Interested Parties**







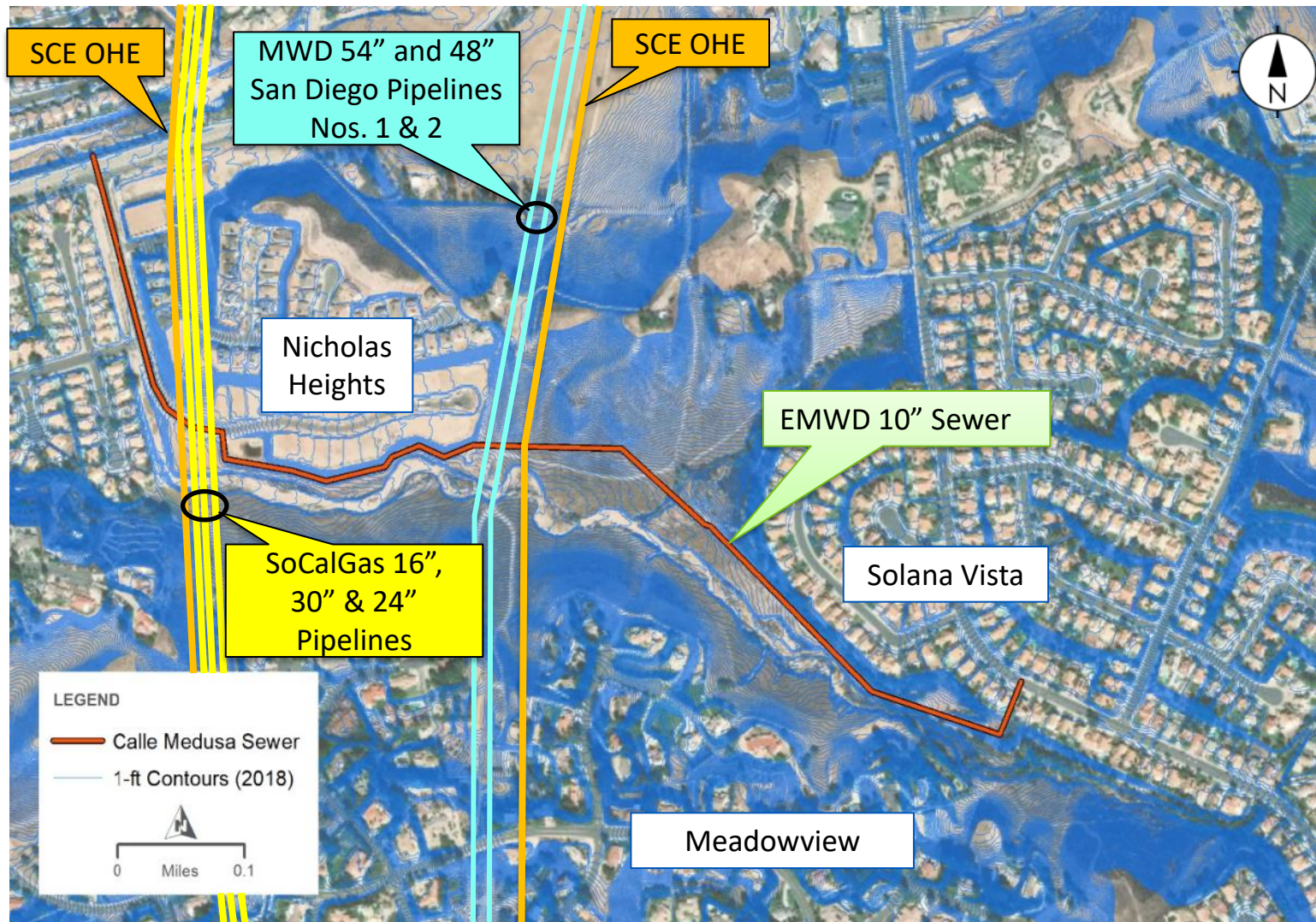
# Via Lobo Channel Upstream Utility Protection Improvements - Highlights

Shaun Stone, P.E.

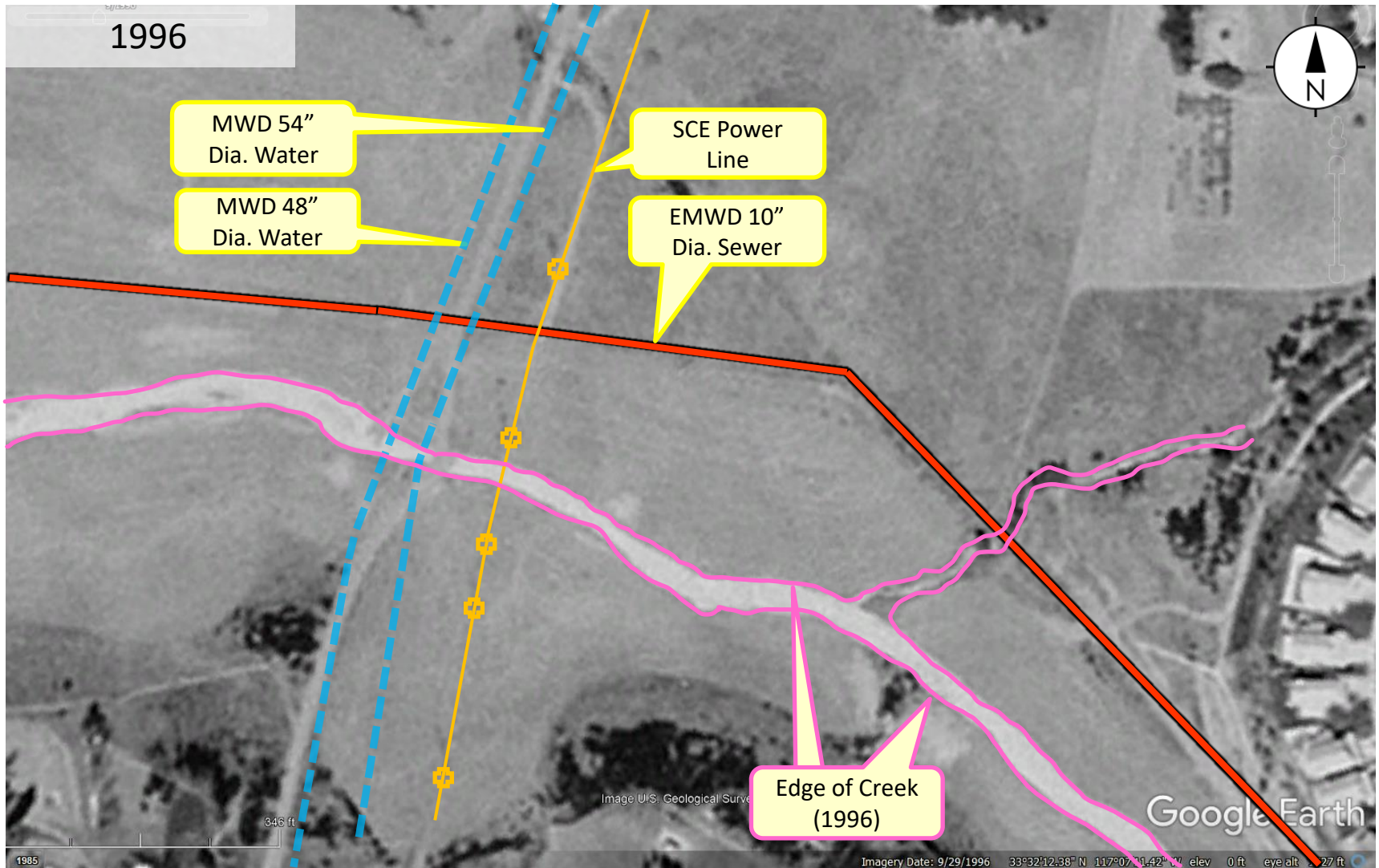
December 15, 2021



# Overview of Existing Utilities

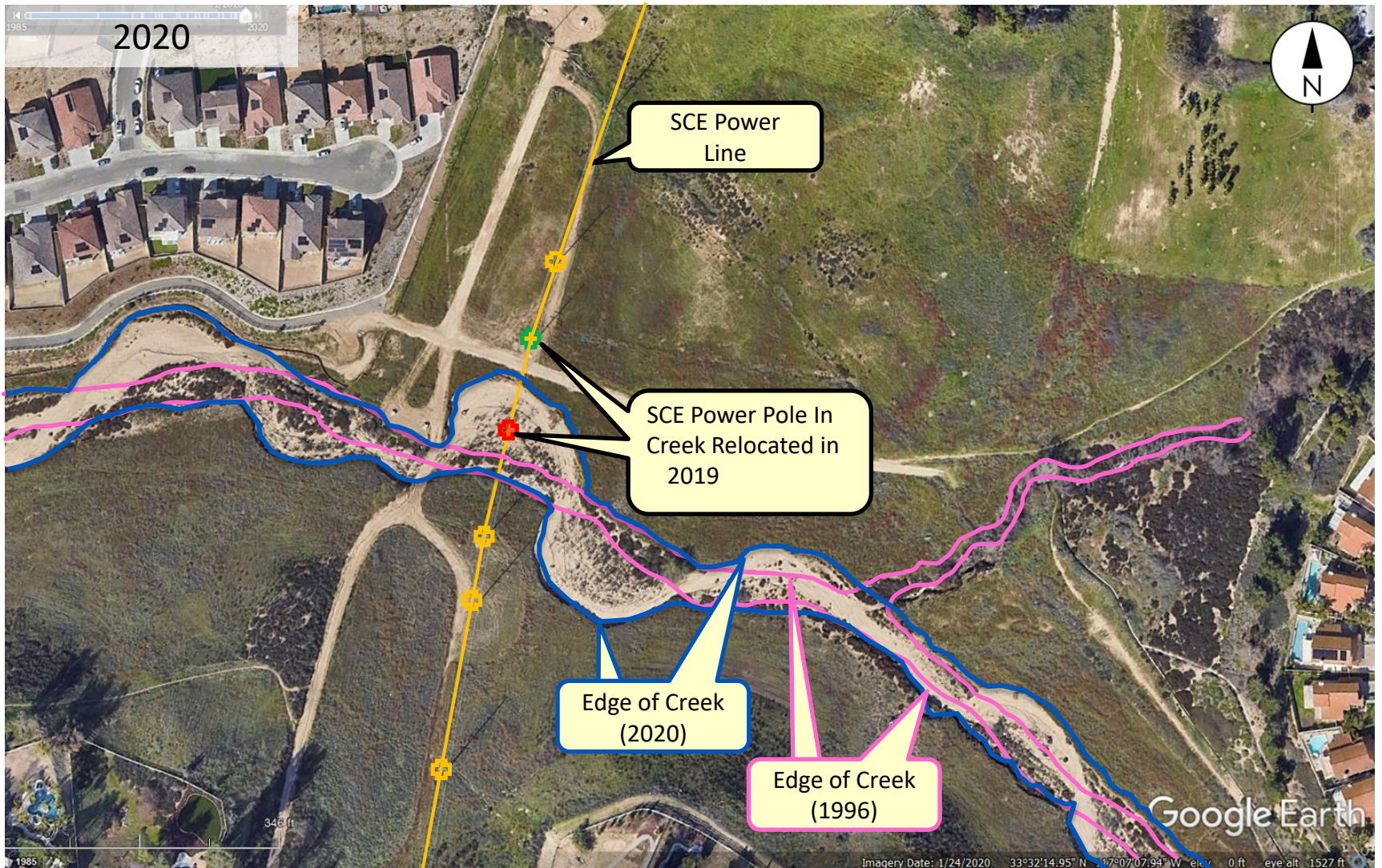


# Historic Movement of Unnamed Creek - Baseline



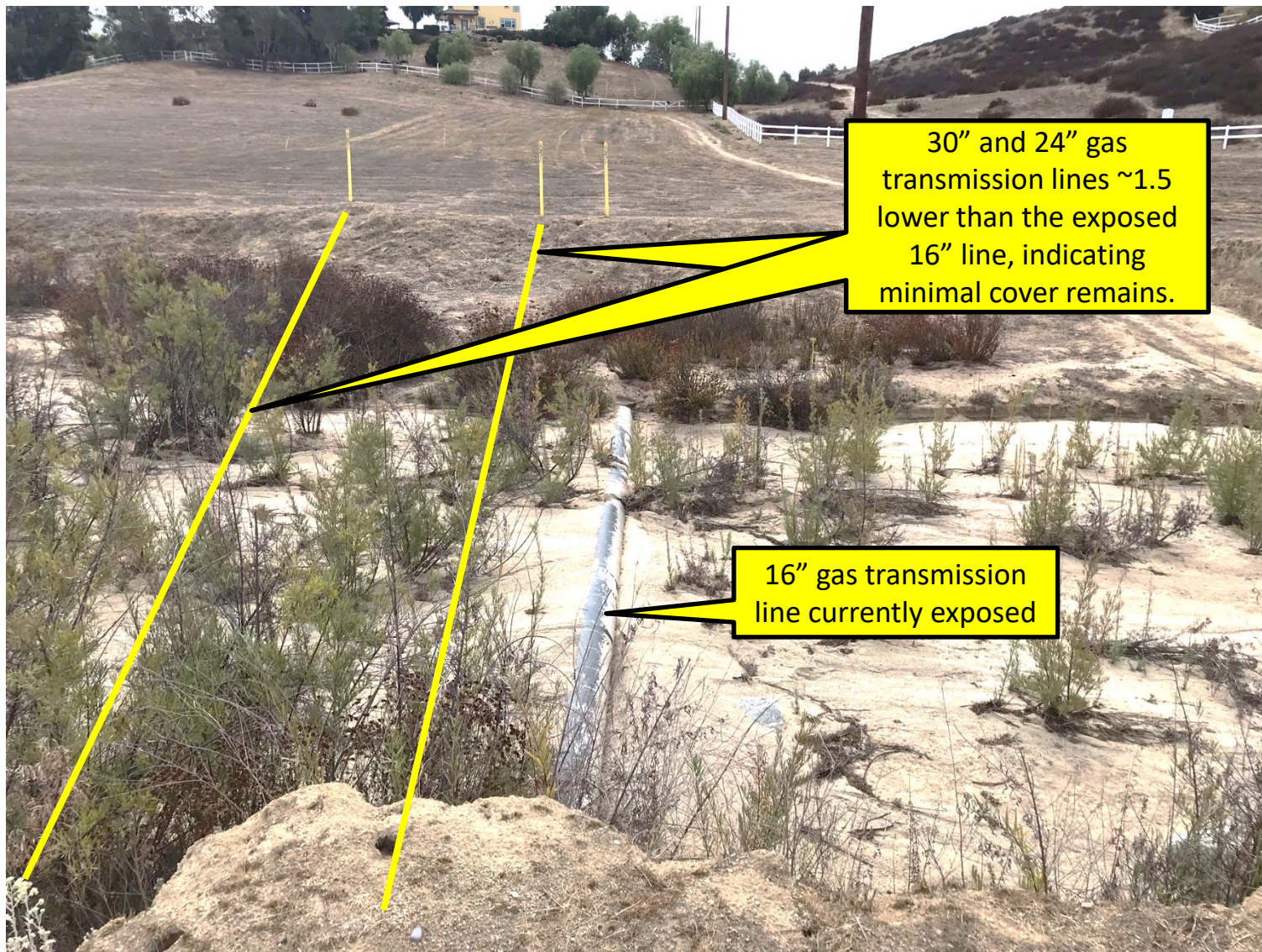


# SCE Pole Relocation in 2020





# SoCalGas Creek Crossing Gas Lines – Looking South

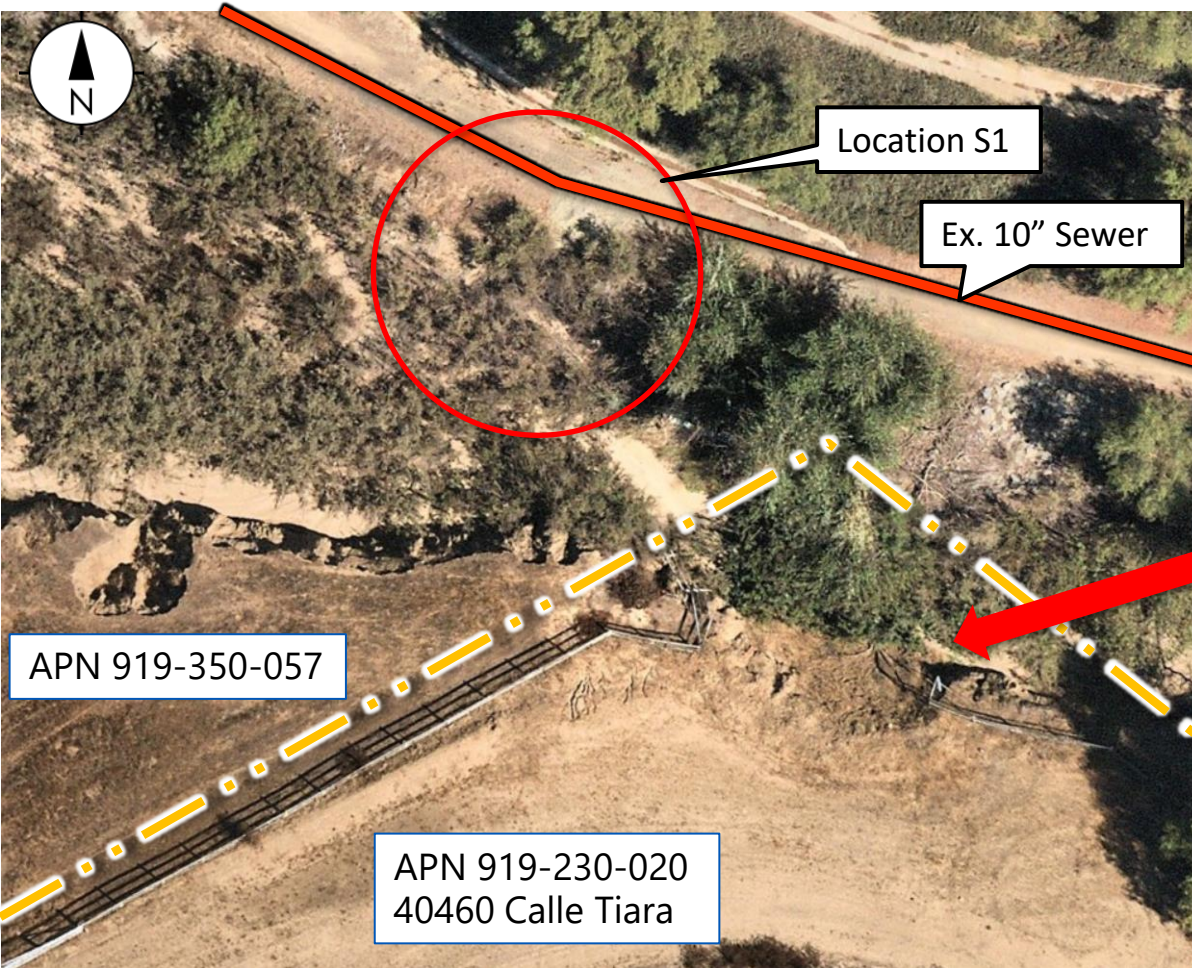


30" and 24" gas transmission lines ~1.5 lower than the exposed 16" line, indicating minimal cover remains.

16" gas transmission line currently exposed

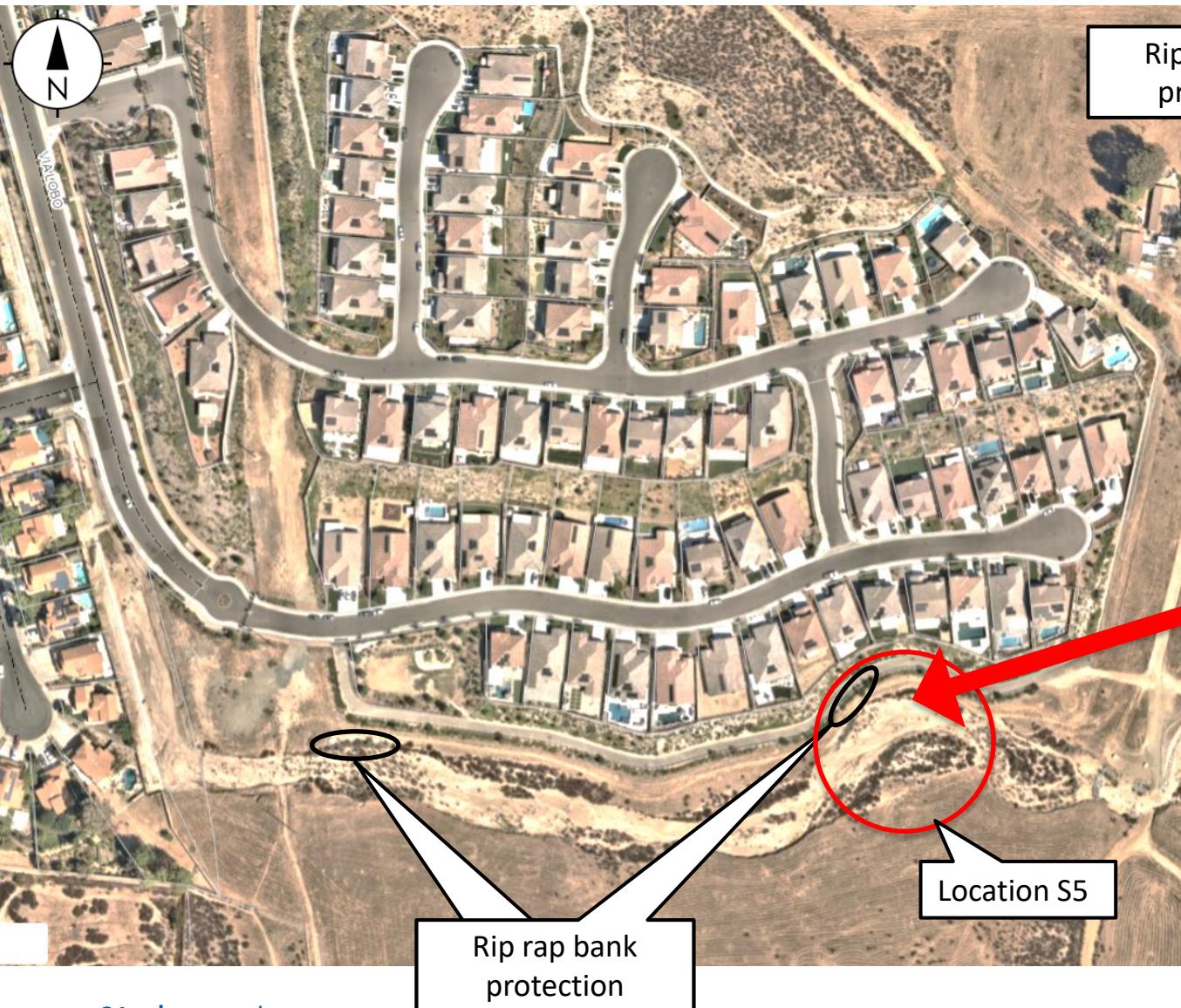


# Community of Meadowview Impacts





# Community of Nicolas Heights Impacts







# Contact Information

Shaun Stone, P.E.

Director of Engineering

Phone Number (951) 928-3777 Ext. 4461

Email: [stones@emwd.org](mailto:stones@emwd.org)